



CYBER WELLNESS @ WGPS

Being Discerning About Online Information

THINK

T = Is it True?

H = Is it Helpful?

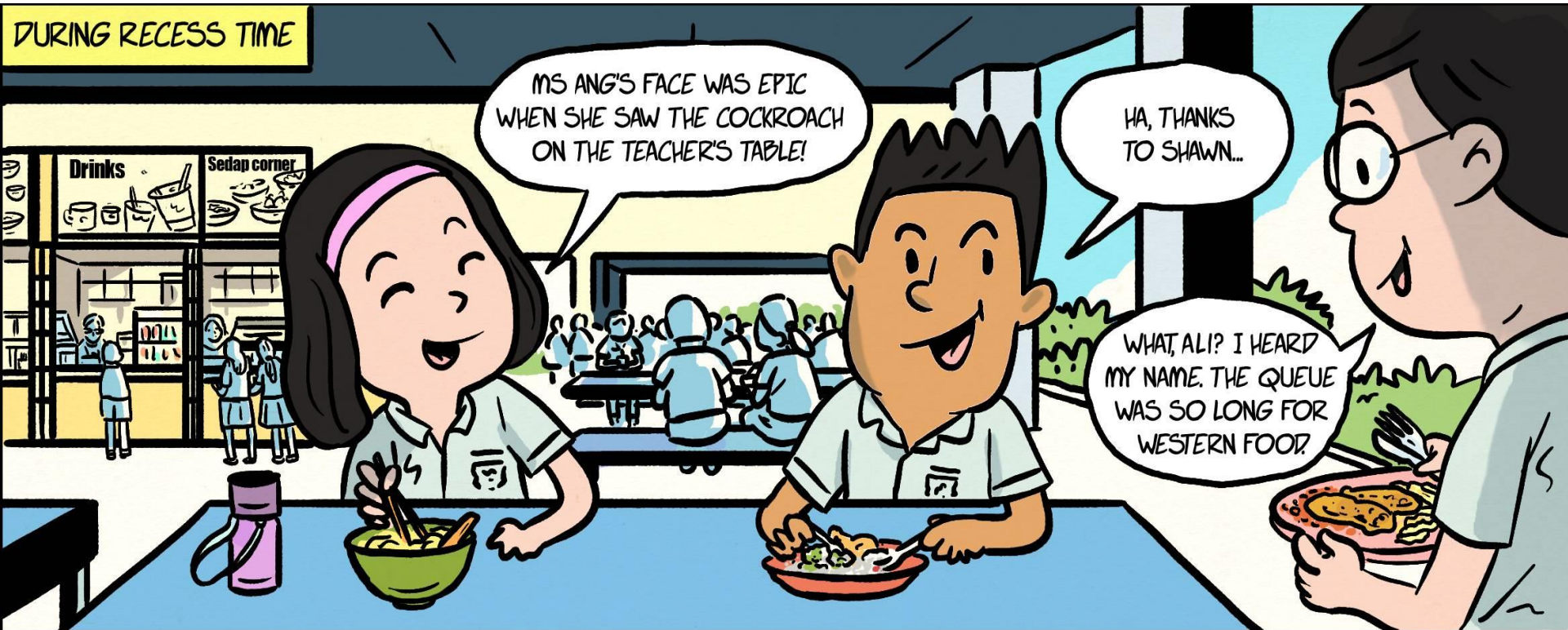
I = Is it Inspiring?

N = Is it Necessary?

K = Is it Kind?



Let's read this Case Study



Can you guess what might happen?

Case Study

THINK

T = Is it True?

H = Is it Helpful?

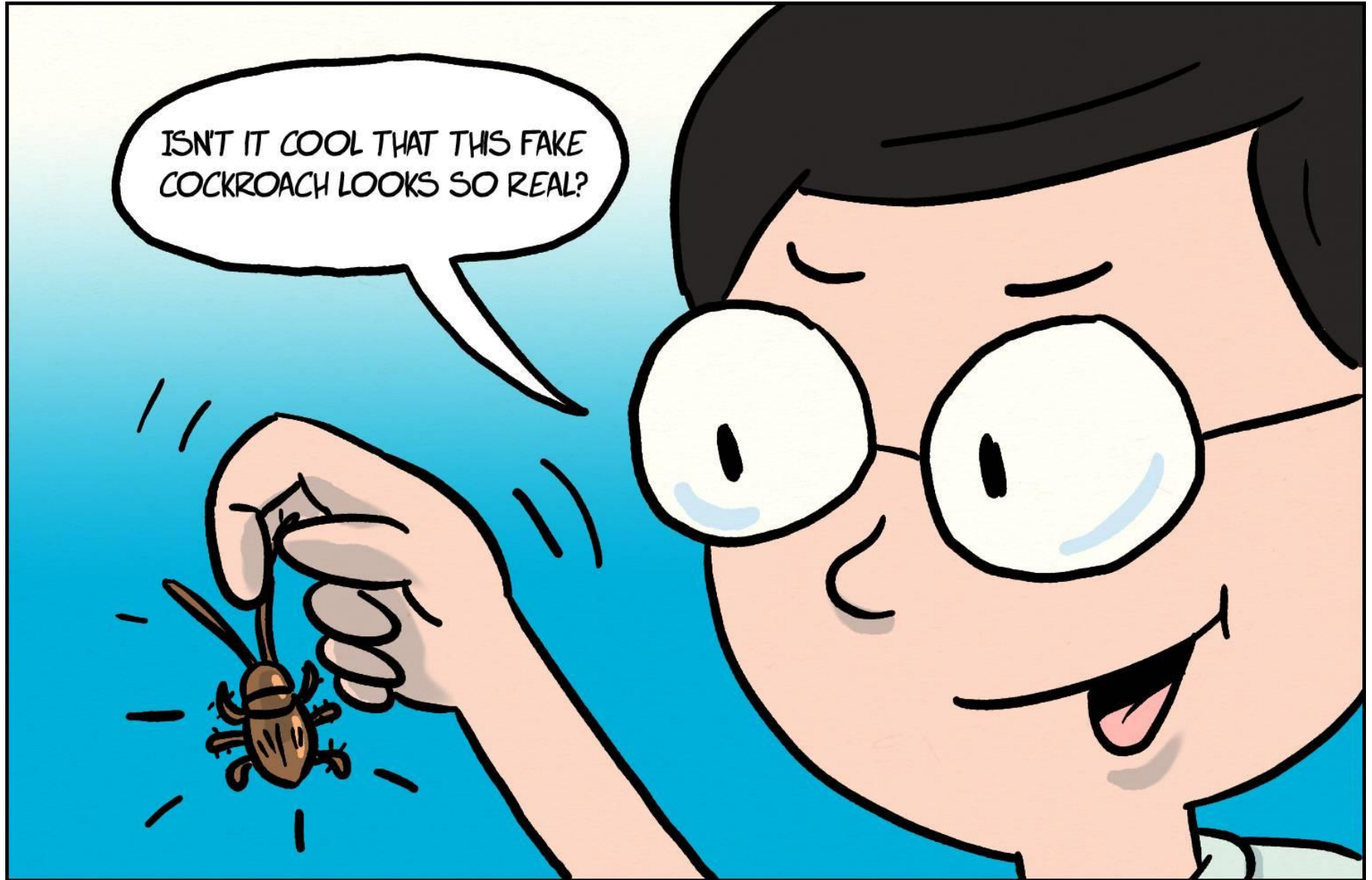
I = Is it Inspiring?

N = Is it Necessary?

K = Is it Kind?



Case Study



Case Study

Have you
come
across
pranks
like this?



Look out



Case Study

Is that
true?

Is that
right?



T.H.I.N.K.



Case Study

What can happen if we post this?



Case Study

Always check whether information is true!



Verify



Case Study

Real
consequences
from false
information...



Case Study

It was
only a
joke...

Oh
No!



CYBER WELLNESS @ WGPS

Although it was
a *joke*, a stall
was **suspended**
because people
thought it was
real...



How Can You Be Discerning Online?



Post, share or comment respectfully by:

- Using the T.H.I.N.K. framework to guide your online actions
 - Is it True, Helpful, Inspiring, Necessary, and Kind?
 - If it isn't, do not post.

THINK

T = Is it True?

H = Is it Helpful?

I = Is it Inspiring?

N = Is it Necessary?

K = Is it Kind?



CYBER WELLNESS
Responsible Digital Learners

How Can You Be Discerning Online



Look out

Look out for tell-tale signs of false information:

- Sensational titles
- Offers that are too good to be true or suspicious requests for help
- Ungrammatical language or spelling errors
- Unknown senders or URLs



CYBER WELLNESS
Responsible Digital Learners

How Can You Be Discerning Online?

Be responsible and verify online information :

- Depending on the type of information received, check against a few authoritative sources like the school, the government or mainstream news sites.
- Check with a trusted adult.
- Use fact-checking websites, e.g. (www.gov.sg/factually)
- Do a reverse image search.



Verify



CYBER WELLNESS
Responsible Digital Learners

How Can You Be Discerning Online?



Role-model

Be a good role-model:

- By adopting the practices outlined, and
- Encouraging your friends to do likewise



Summary



T.H.I.N.K.



Look out



Verify



Role-model



CYBER WELLNESS @ WGPS



T.H.I.N.K.



Look out



Verify



Role-model

THINK

T = Is it True?

H = Is it Helpful?

I = Is it Inspiring?

N = Is it Necessary?

K = Is it Kind?

