



ICT@WGPS

A Newsletter about ICT in West Grove Issue: 02 / 2020



West Grove Primary School

1, Jurong West St 72
Singapore 649223
Tel: 62679634
Fax: 62679635
wgps@moe.edu.sg

Inside this issue:

1. Cyber Wellness e-lessons
2. Holiday activities
3. HBL Surveys

Hey! WGrovians!

The second issue of ICT@WGPS is here! Although being cooped up at home during the circuit breaker may feel terrible, staying at home during the school holiday does not have to be boring.

In this issue, you will find suggested holiday activities which you can do at home, and an announcement on cyber wellness lessons to look out for.



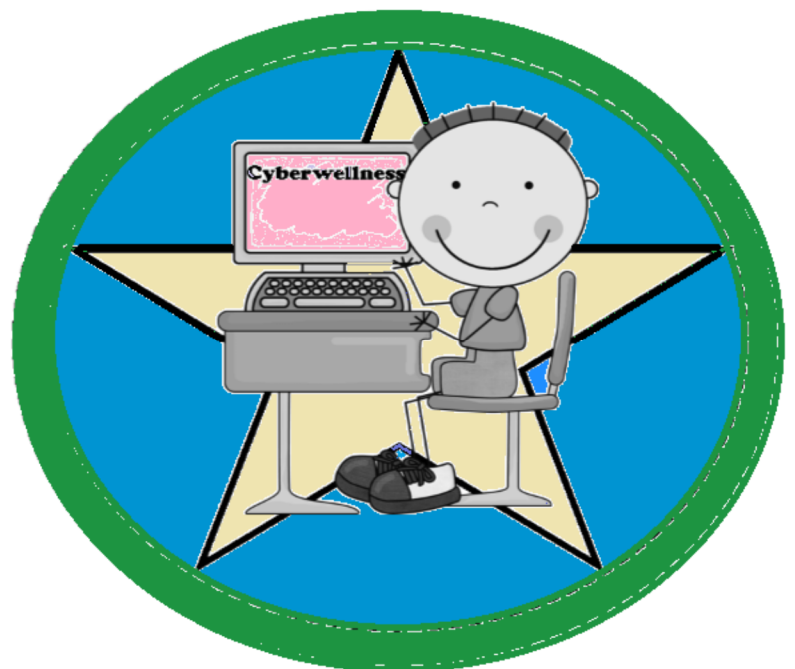
Cyber Wellness e-lessons

With full home-based learning (FHBL) and the extended Circuit Breaker period, the pupils are spending more time online for their studies and recreation. Therefore, cyber wellness plays an even more important role now.

The ICT Department has created cyber wellness e-lessons in Student Learning Space (SLS) in lieu of hardcopy worksheets.

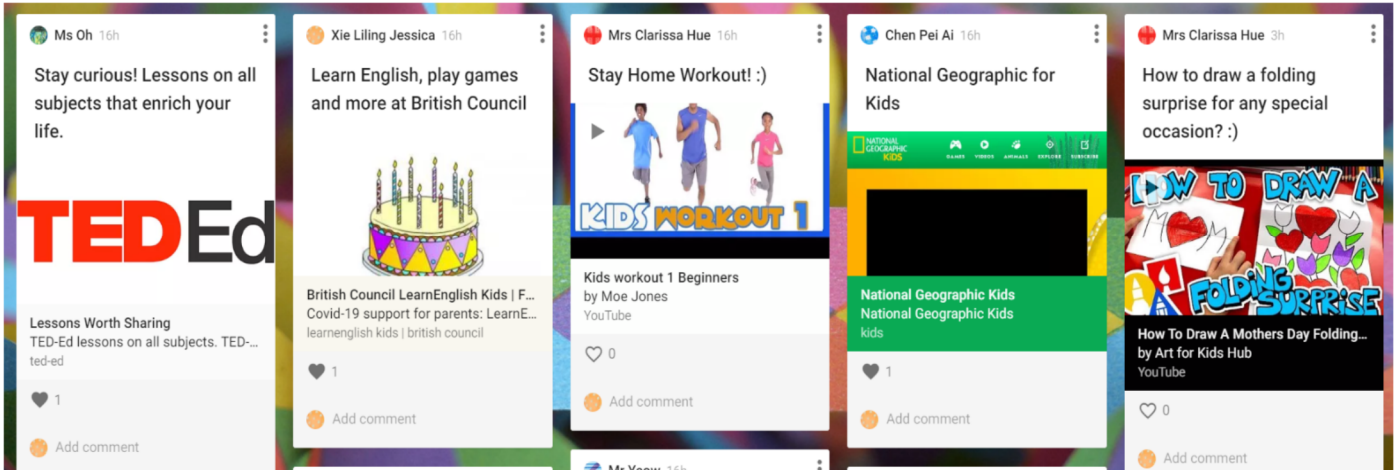
Each term, one cyber wellness lesson will be released. The first cyber wellness e-lesson on New Media Literacy was completed in Term 1 Week 8, while the next e-lesson will be available in SLS from 12 May (Tuesday) to 1 June (Monday).

Pupils who completed the e-lesson with all correct entries will receive a small prize token.



Holiday activities

Some WGPS teachers have consolidated a list of recommended holiday activities for the pupils, with the objectives to keep them active at home and continue learning during the month-long break. The list contains various academic and non-academic activities.



Pupils need to sign in to Padlet using the following login credential:

Username: Same student user ID as SLS

Password: Westgrove71

Please email Mr Sim at matthew_sim@moe.edu.sg should you face any issue with Padlet.



Scan the QR code to access the site

Home-based learning (HBL) surveys

The recent full home-based learning (FHBL) was challenging for pupils, parents and teachers, but we survived it! Now, it is time to refine WGPS home-based learning. Therefore, we would like to hear from both the pupils and parents on their experiences through two separate surveys.

The student's survey titled "Student survey for Full Home-Based Learning (FHBL) Semester 1" can be found in SLS from 4 May (Monday) to 15 May (Friday).

As for the parent's survey, it will be posted in Parents Gateway on 5 May (Tuesday). Please spare a few minutes to complete the surveys so that we could improve.

