



WEST GROVE PRIMARY SCHOOL
1, JURONG WEST STREET 72 SINGAPORE 649223
TEL NO: 62679234 FAX NO: 62679235

Letter To Parents (Term 1)

11 Jan 2021

Dear Parents,

Our Greetings to you and your family as we welcome 2021 and our children back to School. We look forward to another exciting year of learning and growing @ WGPS and hope for a return to normalcy for our children.

Last year was an exceptional and challenging year as we battled with COVID-19. There were several disruptions to both our children's school lives as well as your personal lives. Learning became different due to school closure and home-based learning. We responded in quick time and leveraged on ICT platforms to ensure that there was minimal disruption to our children's learning. Our children responded well to this new learning environment, which would not have been possible without your guidance, support and understanding. Our children suddenly grew up becoming more socially responsible, complying with all safety management measures and became more confident and disciplined in their learning, optimistic and resilient in their outlook when we returned to school. Kudos to ALL of you! I am indeed very proud of our children for being so steadfast and focused on their learning despite the COVID-19 challenges.

The COVID-19 saga is still not over. Hence the need for continued vigilance and compliance to safety measurement measures. My observations in the past few days has assured me that our children are living examples of WGPS R³ICK values – Respect, Responsibility, Resilience, Integrity, Commitment and Kindness.

Our school vision of 'Active Minds, Gracious Hearts' and our school motto of "Wisdom and Grace" remains our guide to ensure that we stay committed to providing a holistic and learner-centred environment for all our children, anchored on character development and sound moral values. Despite the COVID-19 challenges, we will continue to seek and create ample learning opportunities to develop their talents and passions and to bring them closer to realising their dreams and aspirations. Our teachers will continue to engage them through a robust curriculum with differentiated pedagogical approaches and ensure a safe, caring environment.

Our children should grow up to be a self-directed learner, a confident person, an active contributor and a concerned citizen. They must develop good friendships and interact well with their classmates and teachers. We urge parents to be actively involved in their children's learning and growth and to work in close collaboration with the school. Both parents and teachers must remain the inspiration and moral compass for our children to do their best in school and in life.



WEST GROVE PRIMARY SCHOOL
1, JURONG WEST STREET 72 SINGAPORE 649223
TEL NO: 62679234 FAX NO: 62679235

I'm not afraid of storms, for I am learning to sail my ship – Louisa May Alcott

A positive attitude causes a chain of positive thoughts, events and outcomes. It is a catalyst and it sparks extraordinary results- Wade Boggs

Let's march on with hope and optimism. Best Wishes for a wonderful year!

Warmest Regards

Mrs Chandler Jay Siva
Principal



Reflecting on 2020

PSLE Results 2020

We are thankful to announce that despite a challenging year, our Primary 6 cohort of 2020 overcome all odds to achieve the following results.

% students eligible for Secondary School	100%
% students eligible for Express/N(A) stream	73.1%
Subjects above 90% (Passes)	English & Foundation English, Math & Foundation Math, Science & Foundation Science, Chinese, Malay & Foundation Malay, Tamil & Foundation Tamil
Mean PSLE Aggregate (Cohort)	207.9
% with T-Score of 250 and above	11.1%
Number of Successful DSA applicants	22

This was possible due to the support of parents and the hard work of our teachers and students. We wish the Primary 6 cohort of 2020 all the best in their future endeavours.

Staff Updates

We thank the following staff for their contributions to the school. We wish them all the best in their new endeavours

1. Ms Phyllis Pham (Vice-Principal)
2. Mrs Woon-Goh Hui Hian
3. Ms Pamela Low
4. Mr Anwar Susilo
5. Mdm Tan Kok Teng
6. Mrs Annie Tsang (School Counsellor)
7. Ms Vani (Teacher Assistant)



WEST GROVE PRIMARY SCHOOL
1, JURONG WEST STREET 72 SINGAPORE 649223
TEL NO: 62679234 FAX NO: 62679235

Starting 2021 Right

Staff Updates

We are also pleased to welcome the following staff to our school

1. Mdm Siti Rashidah Binte Abdul Rahman (Vice-Principal)
2. Ms Tan Poh Ching (HOD/Mother Tongue)
3. Ms Tan Si Hua (HOD/ICT)
4. Mdm Shafiah D/O Syed Masood
5. Ms Rekha (ICT Associate)

School Hours and Dismissal Arrangements

School hours are from 7.30 a.m. to 1.30 p.m. daily. All students should reach school and be ready to start lessons by 7.30 a.m. We seek your support in ensuring that your child reports punctually to school.

To avoid overcrowding at the gates, students will be dismissed according to the staggered dismissal schedule.

Staggered School Dismissal

Levels dismissed	Time
P1 and P4	1.20 p.m.
P2 and P5	1.25 p.m.
P3 and P6	1.30 p.m.

Venues for Dismissal

Gate	Levels using the gate for dismissal	Remarks
Big Gate 1	P3 to P6	This is also the vehicular gate used by vehicles. However, it will be out of bounds to traffic from 1.30 p.m. – 1.45 p.m. daily.
Small Gate 1	P1 and P2	
Gate 2	All levels	
Gate 3	All levels	



WEST GROVE PRIMARY SCHOOL
1, JURONG WEST STREET 72 SINGAPORE 649223
TEL NO: 62679234 FAX NO: 62679235

Wet Weather Dismissal

Gate	Wet Weather Arrangements
Gates 1 and 2	Parents using both Gates 1 and 2 can wait for your child in the canteen. <ul style="list-style-type: none">• P1 and P2 parents - canteen corridor next to the field• P3 to P6 parents - canteen corridor next to the parade square
Gate 3	Parents using Gate 3 can wait for your child at the corridor of Classroom Block C (Level 1).

Parents Gateway

The school will be using the Parents' Gateway as its main channel of communications with parents. All communications including parents' consent for various school programmes and CCAs will be done through the Parents' Gateway. Please ensure that you are on board the Parents Gateway. If you do face any technical difficulties or have any other concerns, do approach your child's form teacher.

Safe Management Measures

Daily temperature-taking and additional visual and question screening will continue for all students and staff. Students and staff are also required to wear their masks or face shields to school. Students and staff who are unwell, or who have adult household members on home quarantine, Stay Home Notice (SHN) or have flu-like symptoms such as fever, running nose, sore throat and cough, will be required to stay away from school. Please do inform your child's form teacher in such an event.

The sharing of personal items are not encouraged. Please label all personalized items like thermometers, water bottles, face shields and hand sanitizers with your child's name and class. Please ensure that your child has his/her own thermometer with them daily.

It would be a good practice to change into a new mask once every 4 hours. We encourage all students to pack an additional mask and a ziploc bag labelled with your child's name to safe keep their masks during physical exercise / when eating.

Nurturing Responsibility

In our efforts to nurture responsibility in your child, we strongly encourage parents to avoid bringing water bottles, wallets, watches, homework, books, PE attire, consent forms, stationery, files etc. on your child's behalf.



WEST GROVE PRIMARY SCHOOL
1, JURONG WEST STREET 72 SINGAPORE 649223
TEL NO: 62679234 FAX NO: 62679235

School Security

All visitors to the school are reminded to report to the Security Guard Post to have your temperature taken and sign in to the SafeEntry system before proceeding to the General Office for assistance. You are not allowed to go to any other part of the school premises.

Road Safety

The school would like to emphasize the importance of road safety. We hope to seek your cooperation in ensuring the safety of students coming to and leaving school. This is especially important as young children may not have the skills required to use roads properly and do not always fully appreciate the dangers presented. Their small physique also makes them less visible to motorists. Let's do our part to model safe road use.

Reminder on Dual Vehicular Lanes in the Morning

The school allows two vehicles to enter through the Main Gate to better manage congestion. You will see a demarcation of the lanes as shown in the picture below. We urge parents to exercise caution and patience when driving into the school.

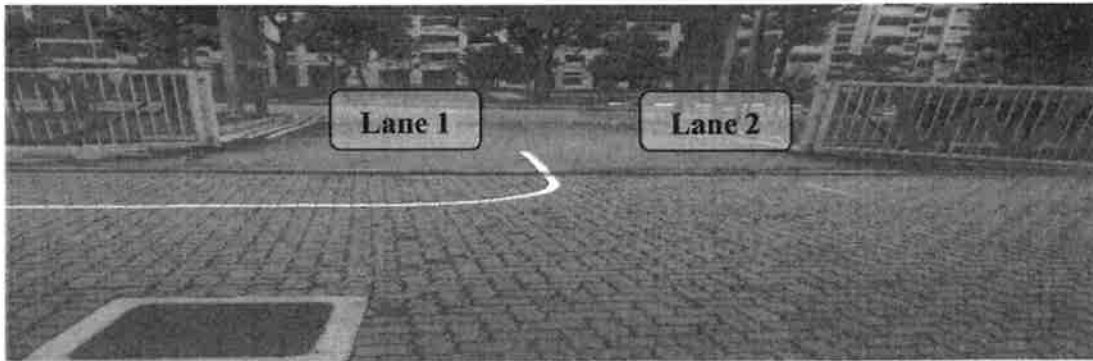
My observations for the past few days show parents

- (a) Alighting children along the roadside – not advisable as it can hinder smooth flow of traffic and cause a possible accident
- (b) Trying to change lanes as you drive into the school and this is dangerous
- (c) Driving at a high speed in the school zone that can lead to a possible accident.
- (d) Failing to abide by the security guard's instructions
- (e) Large numbers of cars entering the school from 7.20 to 7.30am to beat the school starting time. It might be good to send your children early to school
- (f) Several parents are also not using the pedestrian crossings at the traffic junctions but crossing the road just outside the school gates and this can be a danger to you and your children

Please do understand that everyone's safety is paramount and as adults, we must abide by safe driving/ traffic rules and be good role models for our children.



WEST GROVE PRIMARY SCHOOL
1, JURONG WEST STREET 72 SINGAPORE 649223
TEL NO: 62679234 FAX NO: 62679235



Students Cycling or Scooting to School

All parents of students cycling or scooting to school are required to acknowledge an advisory letter which will be issued in Term 1. This is to encourage parents to actively monitor the child's behaviour and conduct in the use of their bicycles / scooters. Students who do not commute safely may not be allowed to cycle / scoot to school.

Parking in School

The school is unable to provide parking for parents and we would like to remind parents who are visiting the school to **park in the nearby HDB blocks**.

For parents who are here to pick up their child who is **unwell**, or for any **emergencies**, please inform the security guard and they will allow you to park in the temporary visitor lots (subject to availability).

School Canteen

All of the stalls in our school canteen are Halal certified, with the exception of **Stall 3 (Not certified Halal)**. Students can also purchase **vegetarian food** from **Stall 6**. Bottled drinks are no longer available for sale in school.

In our continuous effort to inculcate healthy eating habits among our students, the school has embarked on the **Healthy Meals In Schools Program** since 2018. The main objective of this Health Promotion Board initiative is to encourage our students to have a balanced diet (brown rice, vegetables, meat and fruits) as well as to make healthier food and beverage choices. The price of each set meal ranges from **\$1.20** to **\$2.00**. Please do give sufficient pocket-money to your child/children for their meals during recess.



WEST GROVE PRIMARY SCHOOL
1, JURONG WEST STREET 72 SINGAPORE 649223
TEL NO: 62679234 FAX NO: 62679235

We would also like to encourage students to drink plain water and cut down on sugary drinks, as high sugar intake is a contributing factor to diabetes. Students should bring their own water bottles to school and refill them at the water coolers.